

MS27102A

Remote Spectrum Monitor



MS27102A Remote Spectrum Monitor

MS27102A Remote Spectrum Monitor

Capable of sweeping at rates up to 24 GHz/s, the MS27102A allows capture of many types of signals. This includes periodic or transient transmissions as well as short “bursty” signals. Also featured is a high dynamic range, high sensitivity and low spurious signals. This enables the MS27102A (shown here in Fig 2) to reliably distinguish between low-level signals being observed and those signals generated by the monitor itself.



Figure 2: MS27102A Outdoor Spectrum Monitor (IP67)

Key facts

- 9 kHz to 6 GHz
- Sweep speed up to 24 GHz/s
- Integrated web server to view, control and conduct measurements via a web browser (both Chrome and FireFox supported)
- Remote firmware update capable
- Watchdog timer to insure long-term stability for remotely deployed monitors
- IP67 rated for outdoor deployments
- Linux operating system
- Low spurious signals for accurate signal discovery
- 20 MHz instantaneous FFT bandwidth
- Low power consumption < 11 watts (input voltage 11 to 24 VDC)
- Integrated GPS receiver for monitoring location and for time synchronization applications
- Gigabit Ethernet available for high speed transmissions
- Interference analysis: spectrogram and signal strength
- Dynamic range: > 106 dB normalized to 1 Hz BW
- DANL: <-150 dBm referenced to 1 Hz BW, preamp On
- Phase noise: -99 dBc/Hz @ 10 kHz offset at 1 GHz
- IQ block mode and streaming with time stamping for TDOA applications
- Vision™ software optional for automated spectrum measurements, setting alarms and geo-locating signal sources
- SpectraVision™ software options for signal quality analysis

Designed For Remote Applications

With monitors potentially being deployed hundreds or thousands of kilometers from the control center, it is imperative that each probe remain operational under all types of conditions. The MS27102A is designed for robust field deployments, with capabilities for remote power cycling, automated system recovery protocols and firmware updates “pushed” to the monitor remotely.

In the event of an application error or power fluctuation which causes an ongoing interruption in monitor communication, a re-boot policy is implemented to bring the remote probe back to its previous state. Under these conditions, the current firmware is automatically reloaded and on-line operation is restored. Instrument settings are also restored to their previous state.

A “Golden” firmware image is also placed on each unit in a secure location in memory. If for any reason the firmware in the unit becomes corrupted, a Golden Image is used to bring back full operation of the probe. This feature is particularly useful for remote firmware updates.

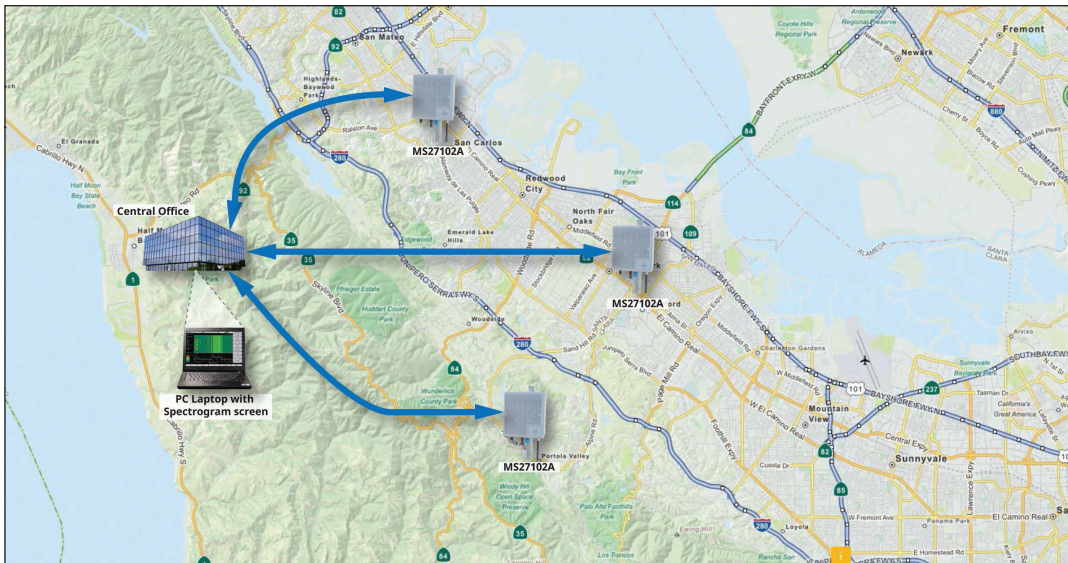


Figure 3: MS27102A Outdoor Spectrum Monitoring System

Remote Firmware Updates

There are several stages or “checks” performed when a new firmware package is downloaded remotely into the instrument. Once a new firmware image is downloaded to the monitor, various tests are performed to insure the code was properly transmitted without error (see Fig 4). The code is then transferred into probe memory and installed. If a failure occurs during firmware acquisition or validation, the process is aborted and the failure status is returned to the user. If the firmware update is installed but does not operate correctly, the Golden Image automatically replaces the downloaded firmware to keep the remote monitor operational.

The Golden Image feature provides the user with assurance that the monitor stays in operation when changes are made to the code. Any bug fixes, updates or user requested features can then be remotely sent to the spectrum monitor and safely incorporated.

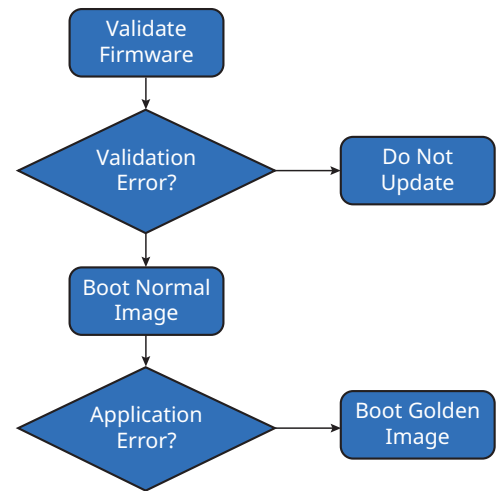


Figure 4: Firmware Update Policy

MS27102A Remote Spectrum Monitor

Integrated Web Server

The MS27102A features an integrated web server. Using an internet browser (Chrome and FireFox are supported), a user from anywhere in the world can log in to the spectrum monitor and control any of features. This includes such parameters as frequency settings, RBW/VBW control, reference level configuration and many other settings relevant to the user's spectrum monitoring application. Trace data, spectrograms and other measurements can be viewed inside the browser window. A key advantage in using the web server is that it is platform agnostic. Any electronic device capable of rendering a browser will work with the web server. Users can utilize their PC/ laptop, tablet or even a smartphone to view the spectrum and change instrument settings. The MS27102A features Gbit Ethernet, allowing fast transfers of measurement data and control information. Figure 5 shows the server application displayed on a smartphone.



Figure 5: User interface displayed on smartphone

See figure 6 below for the main user interface provided by the web server.

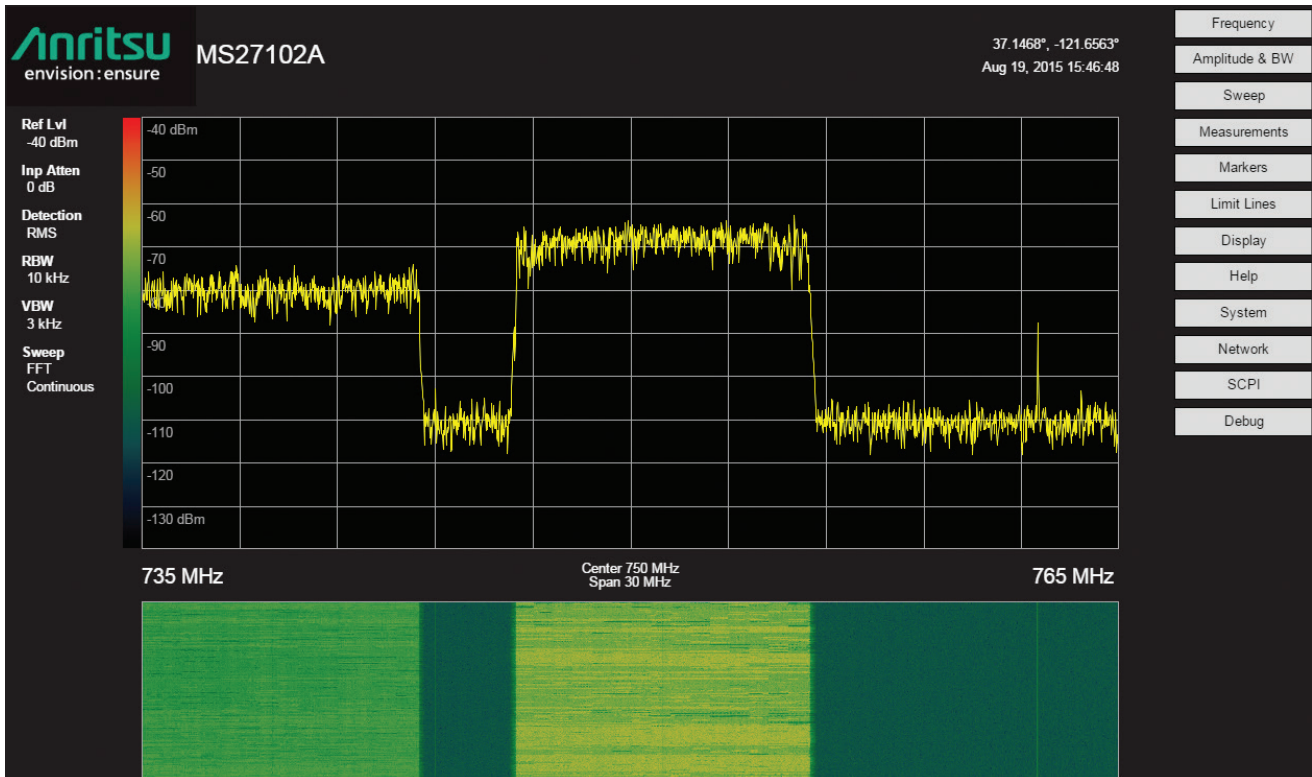


Figure 6. Screenshot of user interface

MS27102A Remote Spectrum Monitor

Hardware

The MS27102A is rated to IP67 standards for outdoor deployment. It is dust tight (no ingress of dust) as well as water resistant. This involves testing the probe for immersion into as much as 1 meter of water for durations of up to 30 minutes. Each port on the unit is ruggedized and weatherized. Ports include power, RF Input, Gbit Ethernet and GPS antenna. See figure 7 for port positioning. With an operating temperature range from $-40\text{ }^{\circ}\text{C}$ to $+55\text{ }^{\circ}\text{C}$, a rugged weatherized case and splash proof design, the MS27102A works in the most extreme weather conditions with guaranteed performance anywhere and anytime.

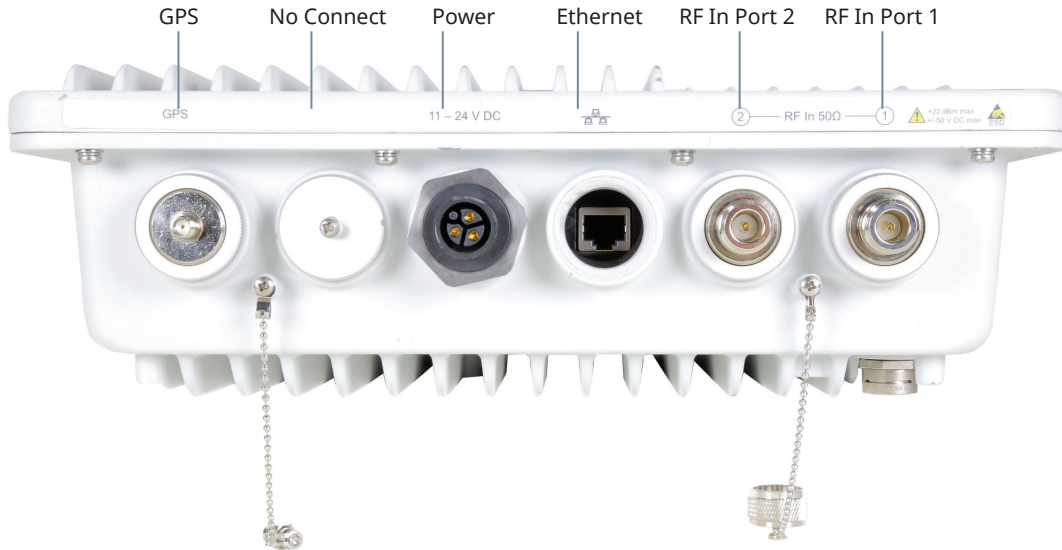


Figure 7. Port locations on MS27102A (2-port option shown)

The MS27102A comes with a mounting plate designed for field applications. With user supplied U-Bolts or clamps, the mounting plate allows the monitor to be mounted on poles of varying diameters. Instructions for mounting your spectrum monitor can be found on the Anritsu website.

The probe uses power from a 11 VDC to 24 VDC source, typically consuming less than 11 Watts. The low power consumed facilitates the use of the spectrum monitor powered from solar cells.

MS27102A Remote Spectrum Monitor

Key Applications

- Radio surveillance and monitoring
- Detection of illegal or unlicensed transmitters, including AM/FM and cellular broadcasts
- Coverage measurements
- Spectrum occupancy and frequency band clearing
- Fast and efficient detection and elimination of interference sources
- Monitor jails/prisons for illegal broadcasts
- Security at military facilities, national borders, utilities, airports and other sensitive sites (see fig. 8)
- Spectrum monitoring associated with lab RF testing
- Government regulators enforcing spectrum policies



Fig 8: Anritsu remote spectrum monitor positioned at airport

Signals of Interest

The wide variety of signals to be monitored fall into several categories. Each of these types of signals will be examined in some detail. These include:

- Intentional interference (including illegal or unlicensed broadcasts)
- Accidental interference
- Occupancy

Intentional Interference

Illegal AM/FM and video broadcasts are found in many parts of the world. These signals can be generated by pirated broadcast equipment or by using over-powered CB radios. Figure 9 shows a table listing interference complaints per year registered by the UK government communications regulator Ofcom. In this table, 'Critical service' refers to interference reports affecting life services communications.

Additionally, jammers are sometimes used for applications such as preventing students from cheating on tests, stopping employees from taking phone calls on company time or to prevent inmates from making illicit calls from prisons. Jammer signals can often leak out into the wider environment, interfering with other legitimate services. Mitigating these types of interference has become a high priority with government regulators.

YEAR	INTERFERENCE COMPLAINTS			
	Critical service		All other	
	London	Rest of UK	London	Rest of UK
2010	29	4	506	72
2011	35	0	424	69
2012	36	2	288	48
2013	21	5	179	93

Fig 9: Interference complaints published by Ofcom, communications regulator in the UK

Accidental Interference

A wide variety of accidental interference can be seen in the spectrum. A common problem is cable TV leakage. This type of leakage exists both from cable signals leaking into the outside environment as well as from external signals leaking into the cable system. This problem has been enhanced with the transmission of cable signals into frequency bands used by broadcasters and cellular operations (such as the 700 MHz LTE band).

DECT phones also cause interference problems, particularly when people bring their wireless phones along when moving from one country to another. DECT frequencies vary in different countries, providing the potential for interference when transported. Figure 10 below shows spectrum used in the U.S. for certain cellular frequencies. DECT phones brought by travelers from other countries can often cause interference.

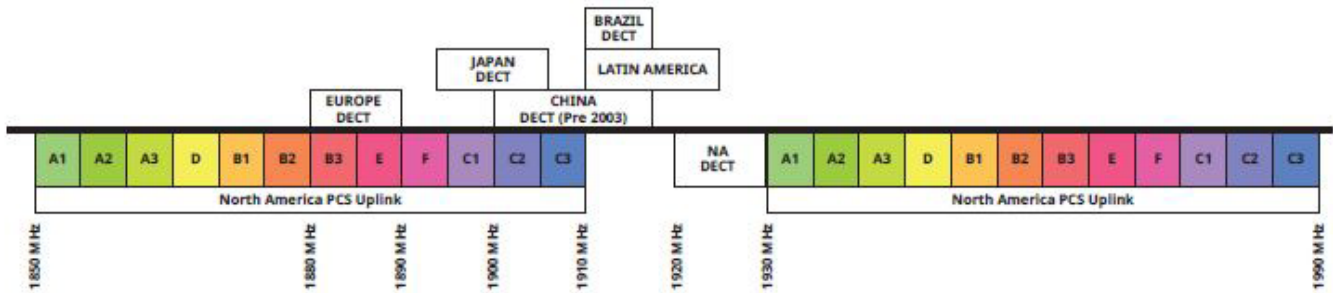


Figure 10: DECT phones improperly used can cause unintentional interference

Other sources of interference include cellular signals (due to antenna tilt or azimuth errors), repeaters oscillating, wireless microphone problems, power equipment and many others.

Occupancy

With the rapid demand for available spectrum from both public and private sectors, new ways are being investigated to allow more efficient use of various frequency bands. A lot of the spectrum is potentially underutilized, providing the opportunity to re-purpose existing spectrum with additional applications.

Spectrum occupancy measurements quantify the amount of usage of frequency bands over a given period of time (see figure 11). Remote spectrum probes are used to monitor a band of frequencies, recording spectral histories as a function of time.

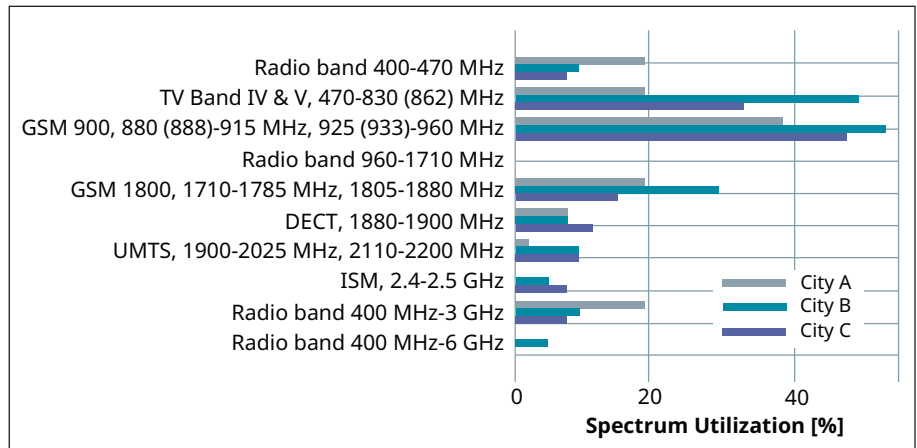


Figure 11: Spectrum occupancy measurement

MS27102A Remote Spectrum Monitor

Performance

The MS27102A is able to sweep the frequency spectrum at rates up to 24 GHz/s. This enables the user to capture intermittent or pulsed signals. Additionally, the spectrum monitor has an instantaneous FFT bandwidth of 20 MHz.

A typical use case for this feature is the real-time capture of the entire FM radio band (88 MHz to 108 MHz in most countries). The user can perform multiple FFT captures of FM signals, storing the data for later playback and analysis. Unlicensed signals can then be identified using this information.

Multiple spectrum sensors can also be deployed to extend the RF monitoring capabilities and for geo-location of signals of interest. Using three or more probes, Anritsu's optional Vision™ software can be used to position an interferer signal or illegal broadcast. Additionally, IQ measurements are time stamped using the probe's GPS receiver. This enables the user to employ their own software using Time Distance of Arrival (TDOA) capabilities to find interferers, given each IQ measurement is precisely time stamped. See figure 12 for TDOA example.

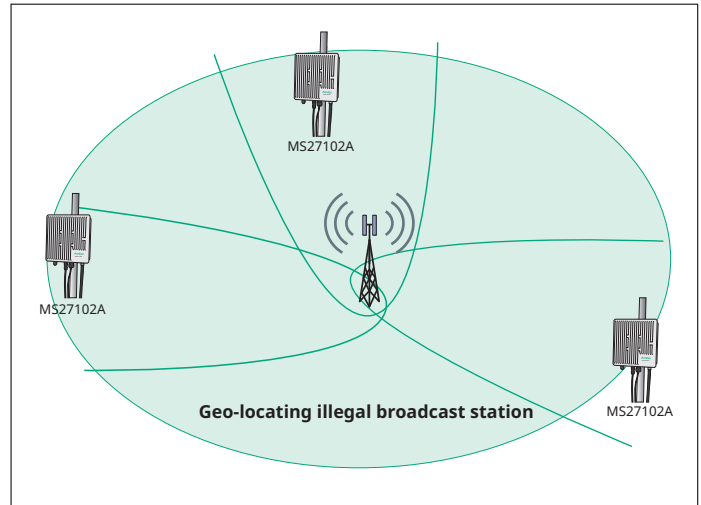


Figure 12: Time Distance of Arrival for geo-locating interference signal

Communications

Communications with the MS27102A are conducted via wired Ethernet. Each monitor is shipped with a pre-programmed static IP address. After making a connection with this IP address, users can then change the address to a different static IP. Alternatively, DHCP or DNS may be used. See Anritsu's Ethernet Configuration Guide for details.

All commands and inquiries with the MS27102A are done using SCPI commands. Anritsu provides a user manual listing each SCPI command, a description of each command and the correct syntax for each command. Users may also download a text file containing SCPI commands to be executed in sequence on the probe.

Summary

The MS27102A is the ideal solution for unwanted signal detection. Using Anritsu's Vision software or your own applications, users can identify patterns of interference, record spectrum history and geo-locate the sources of problem signals. Together with other Anritsu interference mitigation products, Anritsu provides the total solution to your interference mitigation needs.

Notes

Notes

• United States

Anritsu Company

1155 East Collins Boulevard, Suite 100,
Richardson, TX, 75081 U.S.A.
Toll Free: 1-800-267-4878
Phone: +1-972-644-1777
Fax: +1-972-671-1877

• Canada

Anritsu Electronics Ltd.

700 Silver Seven Road, Suite 120,
Kanata, Ontario K2V 1C3, Canada
Phone: +1-613-591-2003
Fax: +1-613-591-1006

• Brazil

Anritsu Eletrônica Ltda.

Praça Amadeu Amaral, 27 - 1 Andar
01327-010 - Bela Vista - Sao Paulo - SP - Brazil
Phone: +55-11-3283-2511
Fax: +55-11-3288-6940

• Mexico

Anritsu Company, S.A. de C.V.

Av. Ejército Nacional No. 579 Piso 9, Col. Granada
11520 México, D.F., México
Phone: +52-55-1101-2370
Fax: +52-55-5254-3147

• United Kingdom

Anritsu EMEA Ltd.

200 Capability Green, Luton, Bedfordshire LU1 3LU, U.K.
Phone: +44-1582-433280
Fax: +44-1582-731303

• France

Anritsu S.A.

12 avenue du Québec, Batiment Iris 1-Silic 612,
91140 Villebon-sur-Yvette, France
Phone: +33-1-60-92-15-50
Fax: +33-1-64-46-10-65

• Germany

Anritsu GmbH

Nemetschek Haus, Konrad-Zuse-Platz 1
81829 München, Germany
Phone: +49-89-442308-0
Fax: +49-89-442308-55

• Italy

Anritsu S.r.l.

Via Elio Vittorini 129, 00144 Roma Italy
Phone: +39-06-509-9711
Fax: +39-06-502-2425

• Sweden

Anritsu AB

Kistagången 20B, 164 40 KISTA, Sweden
Phone: +46-8-534-707-00
Fax: +46-8-534-707-30

• Finland

Anritsu AB

Teknobulevardi 3-5, FI-01530 VANTAA, Finland
Phone: +358-20-741-8100
Fax: +358-20-741-8111

• Denmark

Anritsu A/S

Kay Fiskers Plads 9, 2300 Copenhagen S, Denmark
Phone: +45-7211-2200
Fax: +45-7211-2210

• Russia

Anritsu EMEA Ltd.

Representation Office in Russia

Tverskaya str. 16/2, bld. 1, 7th floor.
Moscow, 125009, Russia
Phone: +7-495-363-1694
Fax: +7-495-935-8962

• Spain

Anritsu EMEA Ltd.

Representation Office in Spain

Edificio Cuzco IV, Po. de la Castellana, 141, Pta. 5
28046, Madrid, Spain
Phone: +34-915-726-761
Fax: +34-915-726-621

• United Arab Emirates

Anritsu EMEA Ltd.

Dubai Liaison Office

P O Box 500413 - Dubai Internet City
Al Thuraya Building, Tower 1, Suite 701, 7th floor
Dubai, United Arab Emirates
Phone: +971-4-3670352
Fax: +971-4-3688460

• India

Anritsu India Pvt Ltd.

2nd & 3rd Floor, #837/1, Binnamangla 1st Stage,
Indiranagar, 100ft Road, Bangalore - 560038, India
Phone: +91-80-4058-1300
Fax: +91-80-4058-1301

• Singapore

Anritsu Pte. Ltd.

11 Chang Charn Road, #04-01, Shriro House
Singapore 159640
Phone: +65-6282-2400
Fax: +65-6282-2533

• P. R. China (Shanghai)

Anritsu (China) Co., Ltd.

27th Floor, Tower A,
New Caohejing International Business Center
No. 391 Gui Ping Road Shanghai, Xu Hui Di District,
Shanghai 200233, P.R. China
Phone: +86-21-6237-0898
Fax: +86-21-6237-0899

• P. R. China (Hong Kong)

Anritsu Company Ltd.

Unit 1006-7, 10/F., Greenfield Tower, Concordia Plaza,
No. 1 Science Museum Road, Tsim Sha Tsui East,
Kowloon, Hong Kong, P. R. China
Phone: +852-2301-4980
Fax: +852-2301-3545

• Japan

Anritsu Corporation

8-5, Tamura-cho, Atsugi-shi,
Kanagawa, 243-0016 Japan
Phone: +81-46-296-6509
Fax: +81-46-225-8359

• Korea

Anritsu Corporation, Ltd.

5FL, 235 Pangyoyeok-ro, Bundang-gu, Seongnam-si,
Gyeonggi-do, 13494 Korea
Phone: +82-31-696-7750
Fax: +82-31-696-7751

• Australia

Anritsu Pty Ltd.

Unit 20, 21-35 Ricketts Road,
Mount Waverley, Victoria 3149, Australia
Phone: +61-3-9558-8177
Fax: +61-3-9558-8255

• Taiwan

Anritsu Company Inc.

7F, No. 316, Sec. 1, Neihu Rd., Taipei 114, Taiwan
Phone: +886-2-8751-1816
Fax: +886-2-8751-1817



Anritsu utilizes recycled paper and environmentally conscious inks and toner.

